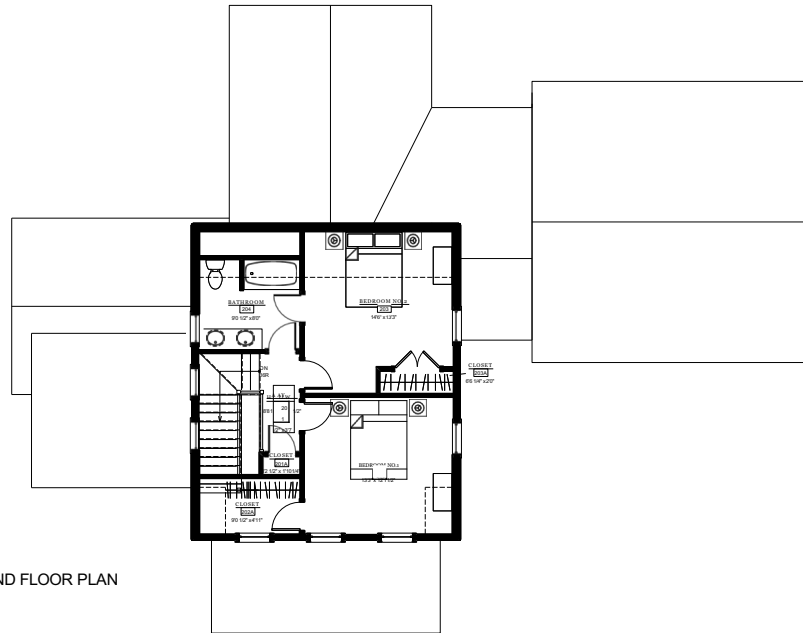
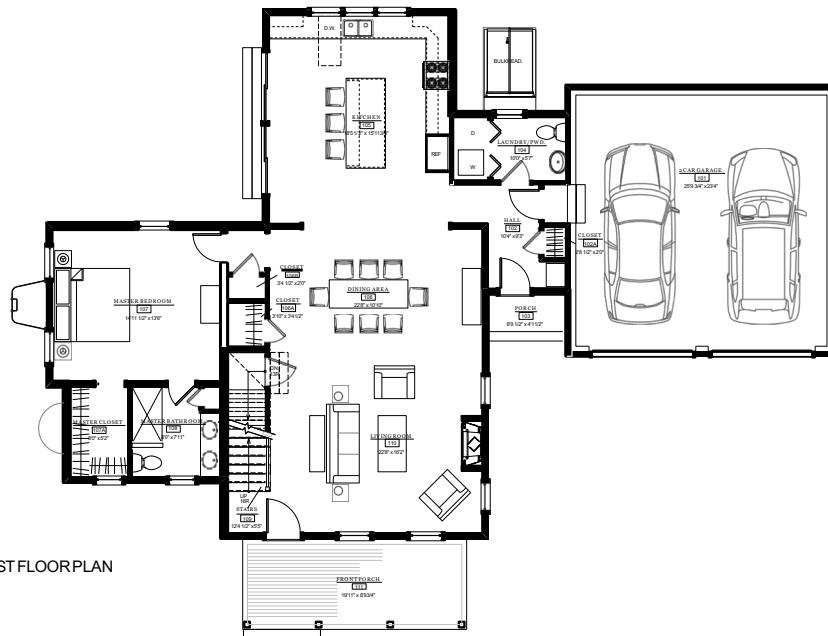


THE COTTAGES AT  
**PORT PLACE**  
 NEWBURYPORT



SECOND FLOOR PLAN



FIRST FLOOR PLAN

THE COTTAGES AT PORT PLACE

THE DORY

FIRST FLOOR SQUARE FOOTAGE (EXCL GARAGE) 1487 SQ. FT.  
 SECOND FLOOR SQUARE FOOTAGE 673 SQ. FT.

TOTAL SQUARE FOOTAGE:\*\* 2160 SQ. FT.

\*\* AREA TAKEN TO EXTERIOR SHEATHING



"Plans are artist illustrations made for marketing purposes only.  
 See builder black line floor plans and specifications for flooring and all other inclusions."