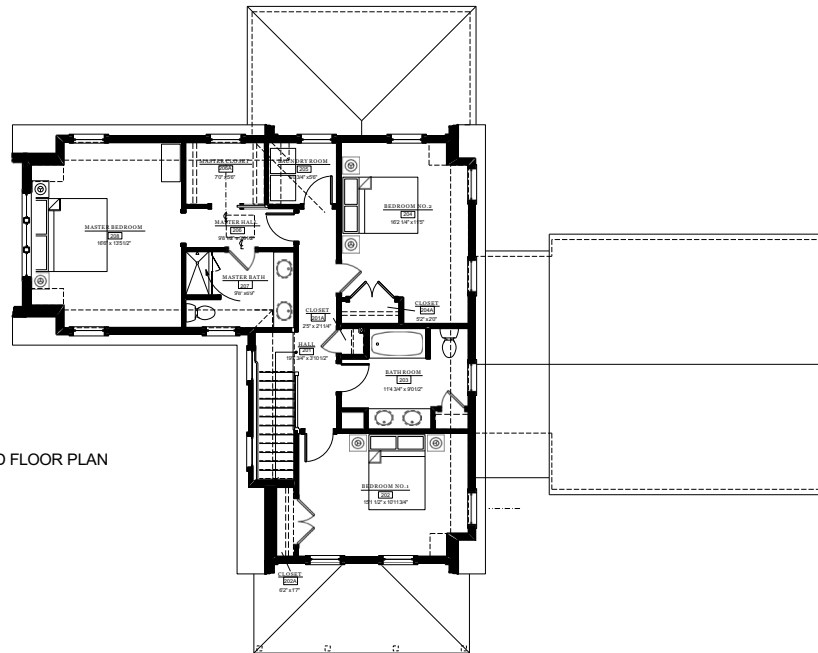
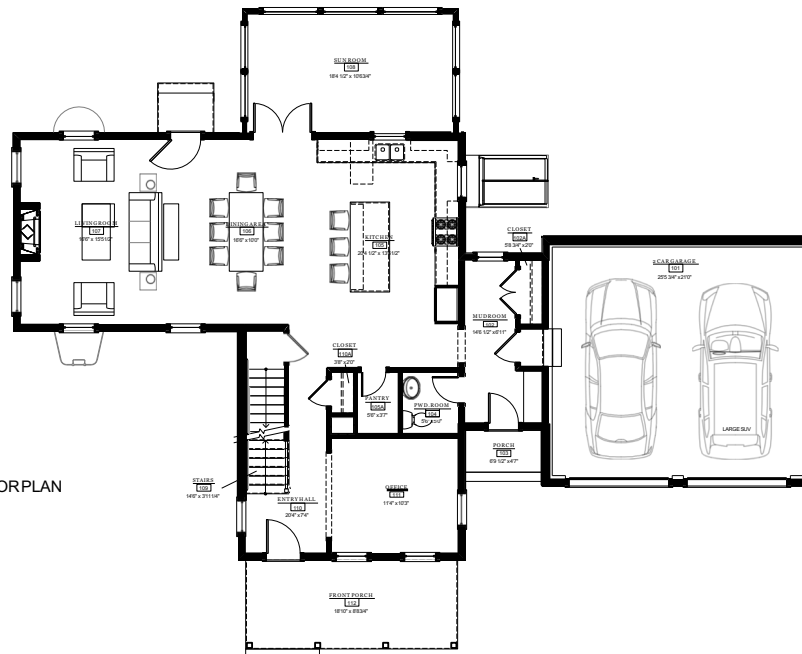


THE COTTAGES AT
PORT PLACE
 NEWBURYPORT

SECOND FLOOR PLAN



FIRST FLOOR PLAN



THE COTTAGES AT PORT PLACE

THE CHATHAM

FIRST FLOOR SQUARE FOOTAGE (EXCL GARAGE) 1442 SQ. FT.
 SECOND FLOOR SQUARE FOOTAGE 1096 SQ. FT.

TOTAL SQUARE FOOTAGE:** 2538 SQ. FT.

** AREA TAKEN TO EXTERIOR SHEATHING



"Plans are artist illustrations made for marketing purposes only.
 See builder black line floor plans and specifications for flooring and all other inclusions."