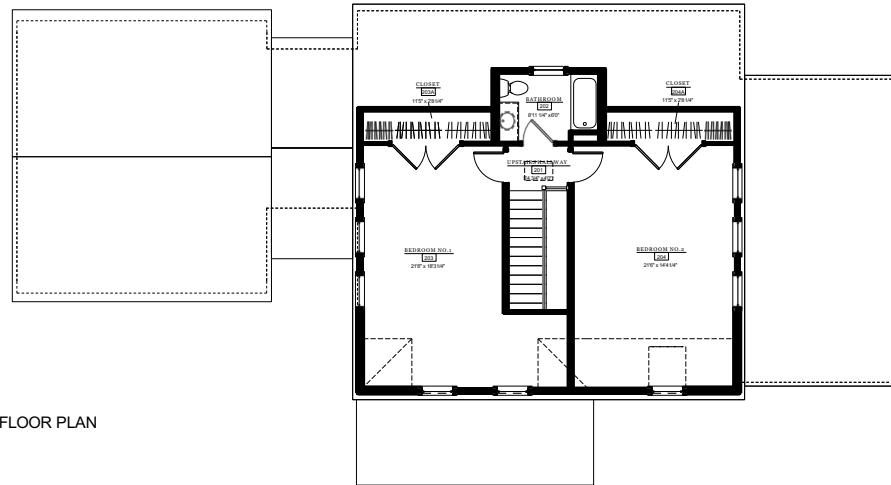
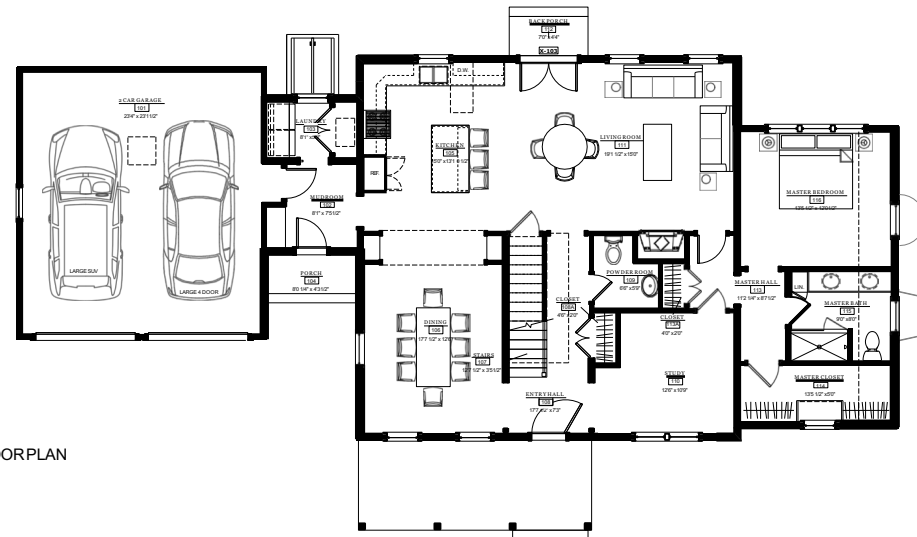


THE COTTAGES AT  
**PORT PLACE**  
 NEWBURYPORT



SECOND FLOOR PLAN



FIRST FLOOR PLAN

THE COTTAGES AT PORT PLACE

THE PORT

FIRST FLOOR SQUARE FOOTAGE (EXCL GARAGE) 1660 SQ. FT.  
 SECOND FLOOR SQUARE FOOTAGE 920 SQ. FT.

TOTAL SQUARE FOOTAGE:\*\* 2580 SQ. FT.

\*\* AREA TAKEN TO EXTERIOR SHEATHING



"Plans are artist illustrations made for marketing purposes only.  
 See builder black line floor plans and specifications for flooring and all other inclusions."